

Specification Number	Length (m) minimum	Lining requirements
GS1	0.4	10 or 13mm GIB® Standard Plasterboard one side

**WALL FRAMING**

Wall framing to comply with,

- NZBC B1 – Structure: AS1 Clause 3 – Timber (NZS3604)
- NZBC B2 – Durability: AS1 Clause 3.2 – Timber (NZS3602)

Framing dimensions and height as determined by NZS3604 stud and top plate tables for load-bearing and non load-bearing walls. The use of kiln dried machine stress graded timber is recommended.

**BOTTOM PLATE FIXING**

**Timber floor**

Pairs of 100 x 3.75mm hand driven nails or three 90 x 3.15mm power driven nails at 600mm centres.

**Concrete floor**

*Internal bracing lines*

In accordance with the requirements of NZS3604 for internal wall plate fixing or alternatively 75 x 3.8mm shot fired fasteners fitted with 16mm disks, spaced at 150mm and 300mm from the end studs and thereafter at 600mm centres.

*External wall bracing lines*

In accordance with the requirements of NZS 3604:1999 for external plate fixing.

**WALL LINING**

One layer of 10 or 13mm GIB® Standard Plasterboard. Vertical or horizontal fixing permitted. Sheet joints shall be touch fitted. Use full length sheets where possible.

**PERMITTED SUBSTITUTION**

The Bracing Unit ratings for system GS1(10) apply to 10mm GIB® Standard Plasterboard and any other GIB® Plasterboard. The ratings for GS1(13) apply to 13mm GIB® Standard Plasterboard and any other 13mm GIB® Plasterboard.

**FASTENING THE LINING**

**Fasteners**

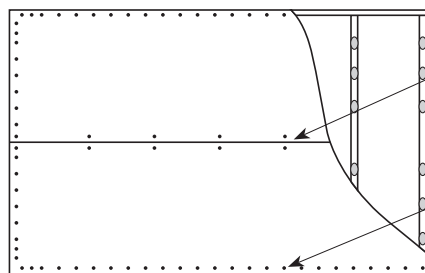
32mm x 6g GIB® Grabber® Drywall Screws or 30mm GIB® nails.

**Fastener Centres**

50, 100 and 150mm from each corner and 150mm thereafter around the perimeter of the bracing element. For vertical fixing place fasteners at 300mm centres at sheet joints in the tapered sheet edge. For horizontal fixing place single fasteners in the tapered edge where sheets cross studs. Use daubs of GIBFix® Adhesive at 300mm centres to intermediate studs. Place fasteners 12mm from tapered paper bound sheet edges and 18mm from sheet end or cut sheet edges.

**JOINTING**

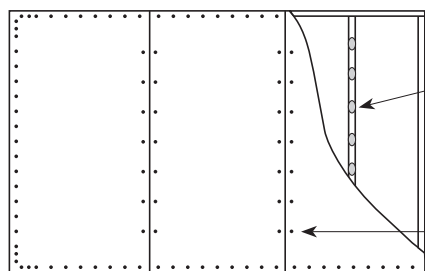
All fastener heads stopped and all sheet joints paper-tape reinforced and stopped in accordance with the "GIB® Site Guide".



Single 32mm x 6g GIB® Grabber® Drywall Screws or 30mm GIB® Nails where sheets cross studs

32mm x 6g GIB® Grabber® Drywall Screws or 30mm GIB® Nails at 150mm centres to perimeter of bracing element

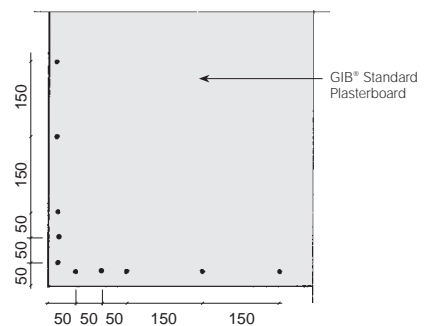
**Horizontal Fixing**



Daub of GIBFix® adhesive at 300mm centres to intermediate studs and noggs

Single 32mm x 6g GIB® Grabber® Drywall Screws or 30mm GIB® Nails at 300mm centres

**Vertical Fixing**



Fasteners are placed at 150mm centres around the bracing element perimeter starting at 50, 100, and 150mm from the bracing element corner. Fasteners are placed no closer than 12mm to a paper bound machine edge of the sheet and no closer than 18mm to a sheet end or cut edge.

In order for GIB® systems to perform as tested, all components must be installed exactly as prescribed. Substituting components produces an entirely different system and may seriously compromise performance. Follow the specifications. This Specification sheet is issued in conjunction with the publication GIB® EzyBrace™ Systems, 2009 and has been appraised in accordance with the BRANZ Appraisal No. 294 (2009).