

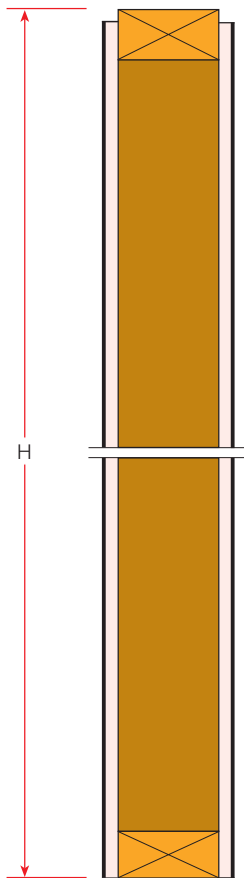


Services may be reticulated within the cavity space between double studded chase walls. Fire protection of fire compartments either side of the chase wall will be achieved when using timber or steel framed non-loadbearing vertical fire separations described in Section 2.

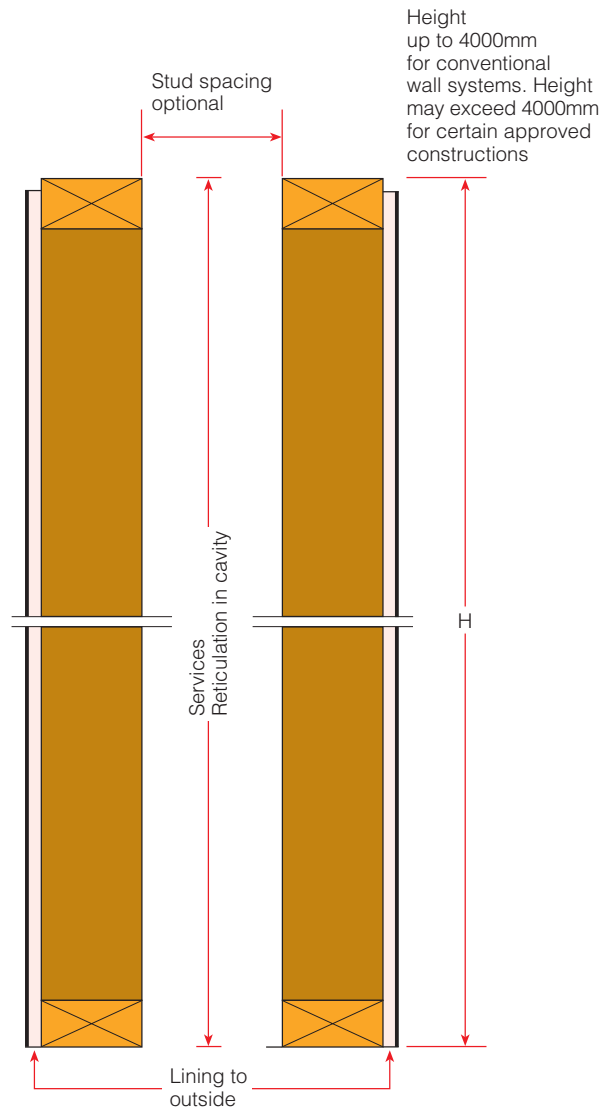
The following conditions apply:

- Any service penetrations must be made in the chase wall as described in the publication entitled “Penetrations in GIB® Fire Rated Systems”.
- Non-loadbearing wall constructions only may be used.

**Example of Conventional single stud wall construction for two-way FRR.**  
Framing may be timber or steel.



**Example of Chase Wall Construction**



**Approved variations are:**

- Chase Wall systems may be stiffened using cross bracing between opposite framing members comprising either stud sections fastened at intervals to opposing studs or rectangular pieces of GIB® fastened by perimeter fixings to opposing studs.
- Stud spacing between walls in the double stud construction is optional.