

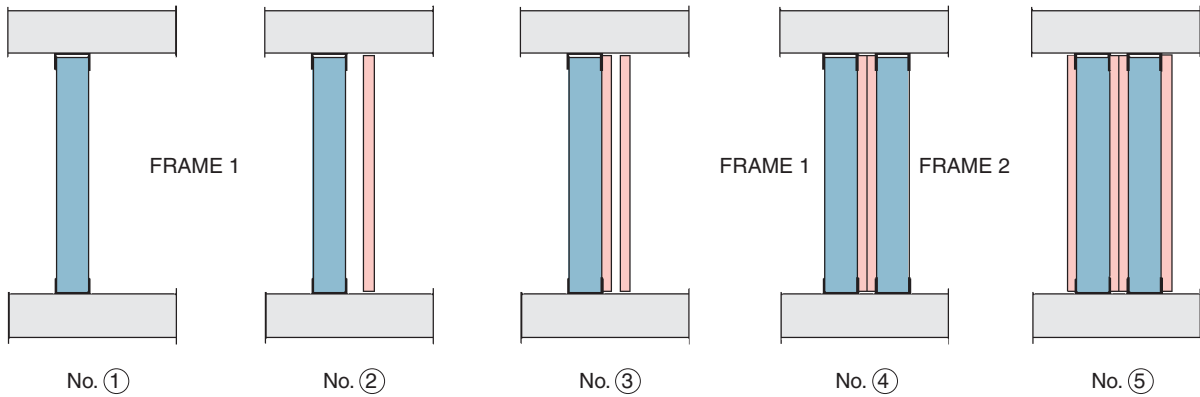


Two Way FRR – Steel Frame

JANUARY 2006

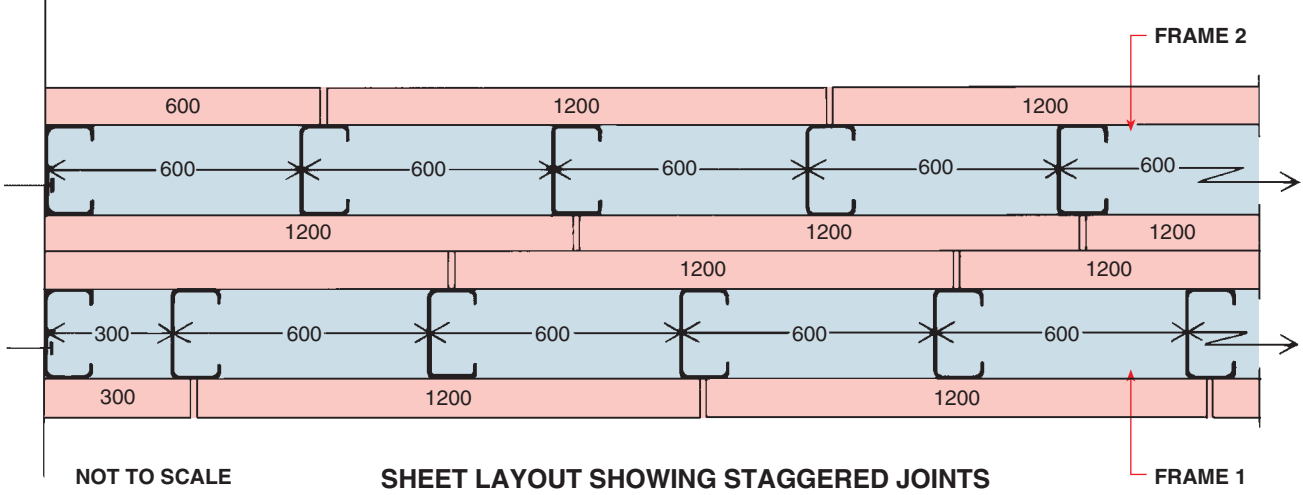
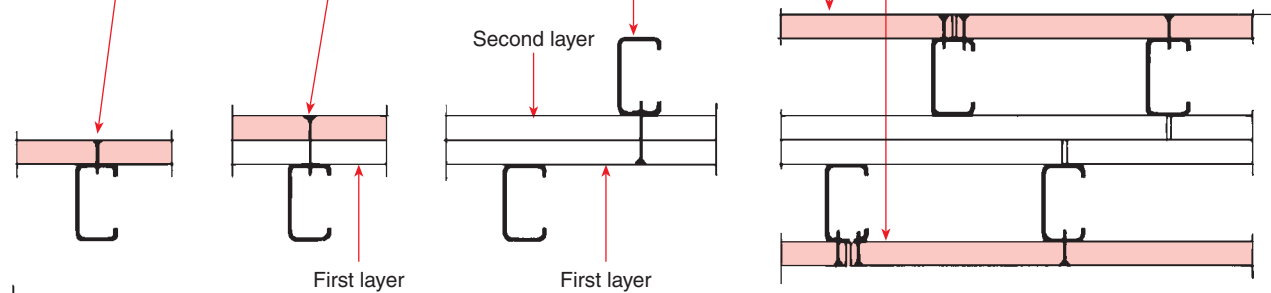
CONSTRUCTION STEPS IN SEQUENCE

(Studs placed to allow a 15mm expansion gap at the top of the frame.)



KEY

1. First steel frame fixed in place.
2. First layer of 19mm GIB Fyreline® "tacked" to Frame 1 with 3 only 32mm x 6g self tapping screws to each longitudinal sheet edge. One below and above the top and bottom channels respectively and one at the centre.
3. Second layer of 19mm GIB Fyreline® fixed to Frame 1 with 51mm x 7g self tapping screws at 300mm centres up each stud.
4. Erect Frame 2 and secure studs to assembly with 51mm x 7g self tapping screws at 300mm centres through the double layer of 19mm GIB Fyreline® on Frame 1. (From the Frame 1 side).  
Note: If the timber framed alternative is used, fasten Frame 2 to the assembly with 63mm x 8g GIB® Grabber® Self Tapping Screws.
5. Fix the outer layer of 19mm GIB Fyreline® to the outside faces of Frames 1 & 2 with 32mm x 6g self tapping screws at 300mm centres up each stud.
6. No fixings to top and bottom channel sections.



NOT TO SCALE

SHEET LAYOUT SHOWING STAGGERED JOINTS

FRAME 1

In order for GIB® systems to perform as tested, all components must be installed exactly as prescribed. Substituting components produces an entirely different system and may seriously compromise performance. Follow system specifications.