



Built on Trust: How BCG and GIB® Delivered Next-Level Terrace Housing

An award-winning terrace housing project in sought after Pt Chevalier is raising the bar for high-end brownfield developments in Tāmaki Makaurau Auckland.

An award-winning terrace housing project in sought after Pt Chevalier is raising the bar for high-end brownfield developments in Tāmaki Makaurau Auckland.

Built by residential construction company BCG Group, Walmer Terraces features five meticulously crafted three-storey homes across a 700 square metre site. The development stands out not only for its striking design and quality finish, but also for the speed and efficiency of the build. Completed in just 11 months from March 2024 to January 2025, the project balances architectural consideration and enduring design with smart material choices, delivering excellence in a highly competitive market.



Named the Mixed Development Category Winner for the Auckland/Coromandel region, Walmer Terraces is a National Finalist in the upcoming Registered Master Builders 2025 House of the Year Awards. For BCG, it's validation of a mission they've been refining over 12 years — starting as a painting and decorating company and growing into one of Auckland's most respected high-end design-and-build firms.

"Our vision is to improve Auckland's urban landscape with considered design and craftsmanship," says Eric Lin, BCG Group Construction Director.

Choosing the right materials is critical to the success of any project, and Eric says when it comes to intertenancy and weatherproofing systems, using GIB® products is a no-brainer.

"Quality, time and cost are the three components you need to balance in construction, and GIB® products tick all these boxes. We use GIB Barrierline® Intertenancy Barrier Wall Systems in most of our homes. It's the best solution for intertenancy walls because it's simple to install, affordable and durable with high fire protection and noise control. Also, because our project managers and carpenters are very familiar with it, the risk of reworks or mistakes during construction are highly reduced."

GIB Weatherline® is another star performer, providing weather protection, moisture control and thermal efficiency as well as outstanding structural bracing, fire resistance and acoustic performance.

"Using GIB Weatherline® enabled us to maintain momentum throughout this project, even in the winter months, allowing an early start on internal linings and enabling parallel cladding and interior work. GIB® plasterboard fixers know the product inside out, which gave us the staffing flexibility we needed to keep our timelines on target and complete the build in just 11 months."





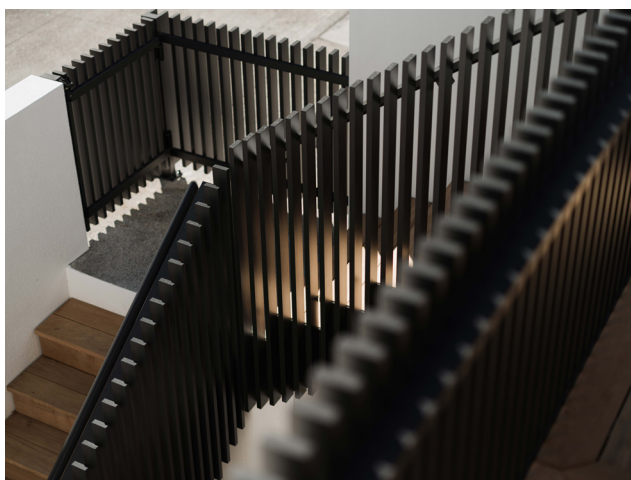
Built on Trust: How BCG and GIB® Delivered Next-Level Terrace Housing

But it's not just the product itself that puts GIB® out in front. Eric says it's the service too.

"We really appreciate Winstone Wallboards' DTS (Delivered to Site) service. We used it a lot for this project and didn't have any issues. The delivery team knows how to handle the products so you don't end up with cracked boards or other damage, and they're always willing to help and go the extra mile."

The GIB® technical team got "a big thumbs up" from BCG too.

Adds Eric, "They delivered invaluable onsite training for us and the GIB® plasterboard fixing company we were using for this project. We always find the GIB® tech support timely and helpful, not just on this project, but on all our projects."



When it comes to complex builds like the Walmer Terraces development, top quality products, services and support makes for a winning combination.

"Walmer Terraces was a three storey build and the access was challenging, especially for the two front lots. The project required significant excavation to the boundary to create light-filled ground-floor bedrooms and living areas."



It was well worth the effort though - despite Pt Chevalier being saturated with new terraced housing, the development captured strong buyer interest, with all five homes quickly being snapped up.

As Auckland continues to evolve, developments like Walmer Terraces show what's possible when craftsmanship, smart design, and trusted partnerships come together. BCG Group's commitment to elevating the standard for urban living - combined with reliable systems like GIB® - has resulted in more than just a successful build; it's a benchmark for quality in high-density housing.

