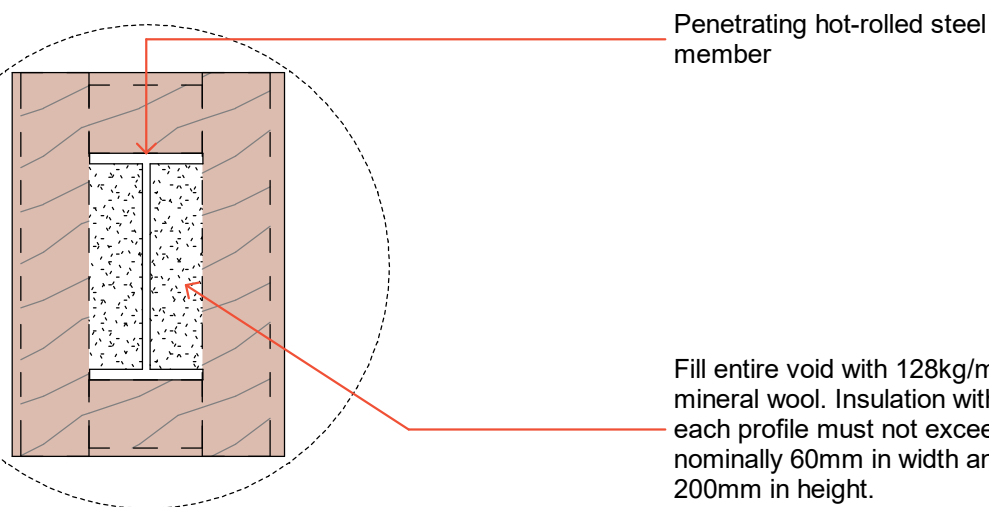


Method 1
(Framing and lining)



Method 2
(Insulation packing)

Construction	Steel thickness	Possible method	FRR
Two-way 30-minute FRR wall system	Equal to or less than 10mm	Method 2 only	-/30/30
	Equal to or less than 20mm	Method 1 or 2	-/30/-
Two-way 60-minute FRR wall system	Equal to or less than 10mm	Method 2 only	-/60/30
	Equal to or less than 20mm	Method 1 or 2	-/60/-

NOTE:

- Full insulation rating can be achieved with 300mm long plasterboard clad-backs around the penetrating steel member. Refer to GFS502 for installation instructions.
- Refer to GFS507 for the hollow section penetration detail.