

The clear goal of improving the value we can offer.

- Best Value with GIB® Technical Support and Delivery
- Which compound can be used on a painted surface?
- 2018 GIB® Architects' Regatta

AN EPD IS LIKE A NUTRITION LABEL

SUSTAINABILITY

by Kevin Golding
Sustainability
Manager



Winstone Wallboards is proud to publish the first Environmental Product Declaration (EPD) for plasterboard in Australasia, complementing our existing Global GreenTag and Declare certifications. An EPD is like a nutrition label, but instead of calories, it covers carbon footprint, embodied energy and other environmental data. This allows the developer to choose the right product for their build, recognising that what is 'green' in one context may not be green in another.

"A key difference to other certifications is that EPDs quantify the environmental performance of GIB® plasterboard", says Barbara Nebel, Managing Director

of thinkstep in Australasia. thinkstep supported GIB® plasterboard in developing our EPD and have completed over 700 EPDs globally.

EPDs are important for green building – particularly in the commercial sector – as they contribute points under Green Star, LEED, BREEAM and other rating tools.

The global green building market is doubling every three years and now makes up roughly one-third of all new commercial, public and high-density residential buildings in Australia, the USA and Europe¹. Locally, the New Zealand Green Building Council (NZGBC) has more than 20,000 homes registered or confirmed for Homestar, as well as 30-50 commercial buildings on its books for Green Star at any one time².

How does it work?

Under the *Environmental Product Declarations Innovation Challenge*³ within Green Star, a project is eligible for:

- 1 point where 2 different products hold current EPDs, or
- 2 points where 6 or more different products hold current EPDs.

The EPD for GIB® plasterboard meets NZGBC's criteria to qualify as a product-specific EPD and is therefore eligible for the full points. EPDs can also be submitted as an innovation challenge within Homestar, though the developer needs to have this accepted by NZGBC first.

When you're next submitting a tender for a commercial or public building, think about submitting the GIB® plasterboard EPD along with it.

To download the EPD brochure go to gib.co.nz/sustainability



LITERATURE SOURCE: ¹ Dodge Data and Analytics (2016). World Green Building Trends 2016. fidic.org/node/9999. ² NZGBC (2017). Chair's Report for NZGBC AGM. For more information go to nzgbc.org.nz/Article ³For more information go to nzgbc.org.nz/Category

WHAT'S IMPORTANT TO US

FORWORD

by Simon Cooper
General Manager

I am often asked why Winstone Wallboards has so many long serving staff. Having a manufacturing background with the company, my typical response is that it doesn't take long for gypsum to get into your blood and, once it does, it is very hard to remove.

But when truly reflecting on what has kept me in the business for so long, it is hard to look past the infectious

passion our people have for our brand, our reputation and for our customers. This perspective has been reinforced to me in recent weeks as I have meet with some of our new staff members, all of whom commented on the strength of the customer leading culture they have picked up on throughout the organisation.

I believe this passion brings the organisation together in a unique way, ensuring we continually strive towards evolving our products, systems and services, with the clear goal of improving the value we can offer to our customers.

But of course we do not always get it 100% right and the key to the ongoing success of any company is how we learn and grow from the feedback we get from

our customers. Now more than ever we need to be listening to you, our customers, making sure we understand the challenges and opportunities you are facing and addressing the 'pain points' you have raised with us. I have no doubt that here at Winstone Wallboards we have the team with the passion and drive to continue to support you in 2018 and beyond.

I am humbled by all the opportunities I have been given at Winstone Wallboards over the past 18 years, and none more so than by my new appointment. Having been more focused on the workings behind the scenes for many years, I now look forward to spending more time out and about with you, our customers.

Thank you for your ongoing support of Winstone Wallboards.



DAVID THOMAS TEMPORARY SECONDMENT

David Thomas, the General Manager of Winstone Wallboards, has been seconded to Fletcher Building as the Interim Chief Executive for the Building Products Division, following the resignation late last year of the current Building Products Chief Executive.

Following on from this we are pleased to announce that Simon Cooper has been appointed as the Interim General Manager for Winstone Wallboards. Simon has been with Winstone Wallboards for the past 18 years, the last four as the National Manufacturing Manager. As a

member of the Senior Leadership Team, Simon has been heavily involved in our continued pursuit of excellent customer service and product quality.

Winstone Wallboards is part of the Building Products division and David Thomas will remain closely connected to Winstone Wallboards and Simon through this period.

Strategically and operationally it will be business as usual and Winstone Wallboards remains fully committed to delivering consistently high levels of service to customers, being competitive, and maintaining our market position.

Congratulations to David and Simon on their interim appointments.

DRUMROLLS FOR THE GRAND PRIZE WINNERS

CONGRATULATIONS

by Gordon White
Market Manager
Residential



From everyone here at Winstone Wallboards we would like to extend a huge thank you to all our customers who took part in our 90 Year celebrations through the second half of 2017.

We are proud to manufacture GIB® plasterboard in New Zealand for local conditions just as we've been doing for the last 90 years. We look forward to working with you on your next project and finally, congratulations to our lucky



Grand Prize winners of the GIB® \$5,000 travel experiences:

- Steve Clapham, from DLM Architects
- Hayden Davies from Jennian Homes Otago
- Clive Barritt from Clive Barritt Builders
- Paul Stevenson from Class E Build
- Raymond Chen from Chen Building



TOP LEFT: John Kitchen, Winstone Wallboards (WWB) and Steve Clapham from DLM Architects, **TOP MIDDLE:** Hayden and Debbie Davis from Jennian Homes Dunedin, Steven Lindsey (WWB), **TOP RIGHT:** Clive Barritt from Clive Barritt Builders and Alan Still (WWB), **BOTTOM LEFT:** Gordon White (WWB), Mrs Chen from Chen Building, Steve O'Brien and Chris Wright, Mitre10, **BOTTOM RIGHT:** Kerry Lockyer (WWB), Paul Stevenson from Class E Build and Alan Carr, PlaceMakers.

BEST VALUE WITH
GIB® TECHNICAL
SUPPORT AND
DELIVERY

SERVICE

by Nicole Stock
Market Manager
Commercial



Everyone is trying to save costs in their building projects whether it's a small renovation or a big commercial project. Cost comes in a range of forms beyond the sticker price: delays on site; hidden charges for extra services; poor workmanship that means rework, damage and replacement costs and waste.

Our exceptional technical support and delivery services reduce costly delays and help your site run more efficiently while supplying the consistent, reliable, well-made product that you expect.

How do we provide more value to you and your project?

GIB® plasterboard products are consistently delivered where and when you need it creating cost efficiencies and helping you avoid costly delays.

Delivered to Site Service in Auckland, Hamilton, Tauranga and Christchurch.

- On time delivery and text message alerts provide cost savings through fewer delays and efficient programming.
- With extra labour services, GIB® plasterboard handling experts can efficiently unload and carry product to the right floor and split into room lots to allow faster installation.

- Our delivery team reduces the risk of damage in carrying the product through the site, through doors and corridors. If damage occurs in delivery we replace the board at our cost.

Next day delivery to merchants anywhere in New Zealand.

- House lot order make-up and split into wall and ceiling boards making it faster to install on site.
- Wide range of lengths, widths and edge configurations readily available to minimise installation time and waste.

Accurate, New Zealand-specific technical information

- Support when you need it to help you get on with the job quickly, avoid costly delays and to mitigate future liability.
- The GIB® Helpline 0800 100 442 is available during business hours for any questions or assistance you need so you get quick answers, avoiding delays and mistakes.
- GIB® literature and manuals provide robust and accurate information making it easy to quickly find what you need.
- The GIB® Warranty gives you peace of mind. If we get it wrong, we'll put it right, every time.

The new GIB® Website makes it easy to quickly find the technical information you need including accurate GIB® CAD and BIM details to save you time and reduce detailing risk.



DOWNLOAD TODAY.

Following strong demand we have refreshed and released the GIB® App. The refreshed GIB® App has all of the great functionality you've grown to love and now includes fast access to the most popular GIB® Site Guide sections. So get online today and download the refreshed GIB® App. *search for GIB plasterboard.



WHICH COMPOUNDS
CAN BE USED ON A
PAINTED SURFACE?

COMPOUNDS

by Anuradha Abhyankar
PhD, ATSC
Senior Chemist



This is a popular question asked when doing patch work or a renovation. To address this question lets get to basics. When a compound is applied to a new plasterboard surface it gets intermeshed

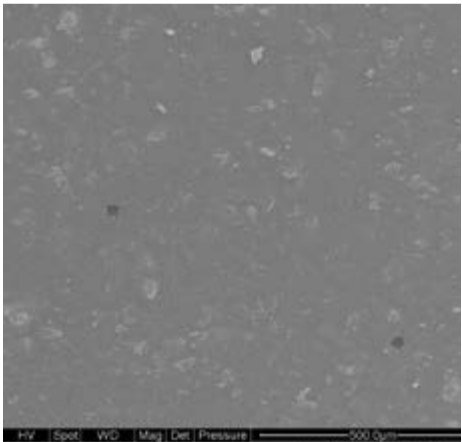
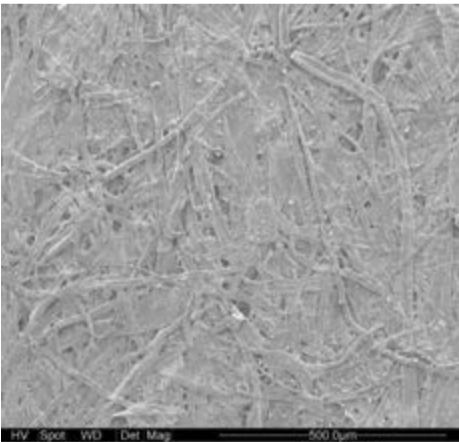
with the fibres in the paper (Figure 1). The spaces in-between the fibres act as keying points for the compound to adhere. Setting compounds (plaster based) grow gypsum crystals in-between these microscopic spaces and bring about good adhesion to the paper. When air drying compounds (ready mix) are used, the glue (binder) in these compounds harden (coalesce) on drying and bring about the adhesion.

When painting a new plasterboard surface, the paint coats the paper fibres and forms a film over the whole surface (Figure 2).

Setting compounds do not get many keying points on a painted surface resulting in poor adhesion. On painted

surfaces it is better to use an air drying compound with a relatively high amount of binder. GIB Plus 4® has a high amount of binder and Winstone Wallboards

recommends using this when stopping over painted surfaces. A light sand of the painted surface before compound application improves adhesion.



LEFT: Figure 1 - Plasterboard surface showing fibres in the paper. RIGHT: Figure 2 - Paint forms a film over the plasterboard surface.

THE USE OF FIRE
RATED SEALANT IN
GIB® FIRE RATED
SYSTEMS

TALKING TRADE

by Graeme Robertson
Senior Technical
Advisor



We often get asked on the GIB® Helpline what fire sealant should be used to seal the perimeter, or joints between sheets, in our fire rated plasterboard systems. The short answer is 'Sealant is not generally required in GIB® Fire Rated systems (FRR), the key is to ensure plasterboard sheets are touch fitted and overlap at corners'.

Except when clad, the outer layer has all joints and junctions tape or trim reinforced and stopped with 2 coats minimum.

Wall/ceiling junctions can be protected either by 'square' stopping or GIB-Cove® over the lapped sheets.

An alternative to stopping sheet joints is to cover them with a minimum 150mm wide strip of any 10mm (or thicker) GIB® plasterboard, centrally placed over the joint, and screw fixed to the underlying framing at no more than 300mm centres.

When is fire sealant required?

It is often a good idea to use a fire rated sealant between dissimilar materials, like where plasterboard abuts masonry, if it's not otherwise protected such as by solid blocking.

If any sealant is required in a GIB® Fire Rated System, this will be stated in the system notes and specific details.

For example, fire rated sealant is an integral part of the GIB® Shaftwall system and is required in some instances in a GBSJ 60 floor/ceiling system.

Of course fire rated sealant can be used to fill gaps, joints and junctions in which case, performance verification must be obtained from the supplier that will specify the type, depth and width of sealant required to achieve the FRR for that specific use.

PLASTERBOARD –
LINED PARTITIONS
IN COMMERCIAL
CONSTRUCTION

SEISMIC INFORMATION

by Hans Gerlich and Richard Hunt
Winstone Wallboards Engineering Team

In order to protect plasterboard-lined partitions from damage, connections must be minimised and separation from the main structure must be provided so that seismic movements can be accommodated. Further information is available on the GIB® Website showing the principle of constructing partition framing with metal top and bottom tracks and friction-fitted metal or timber studs. Plasterboard linings are fixed to studs but not to the top and bottom tracks. These methods significantly reduce the risk of earthquake damage to gypsum plasterboard lined partitions in commercial construction. All details involve disconnection from main structural elements and a regular pattern of intermediate control joints. Gypsum plasterboard packing strips behind joints ensure on-going integrity of fire or noise control separations.

Proprietary trims and finishes (such as the GIB® Metal Trim Control Joint (P35)) can be employed to create clean shadow lines or other options chosen depending on architectural preference.

For more information on low damage solutions and repair strategies please refer to the “Earthquake Information” section under the “Downloads and Resources” of the GIB® Website.

Current wider industry initiatives seek to further develop suitable details for low-damage design of non-structural elements. Information on the GIB® Website will be updated as information becomes available.



MATCH THE READY
MIXED JOINTING
COMPOUND TO
SUITE THE DRYING
CONDITIONS

COMPOUNDS

by Edwin Zijdeveld
Product Manager



Ready mixed compounds dry harder in better drying conditions. When drying conditions change (e.g. winter versus summer) a harder or softer compound needs to be used to maintain the same hardness and sanding characteristics. A compound that is too soft will result in it scratching too easily and a compound that is too hard will be difficult and slow to sand.

The GIB Trade Finish® range has four ready mixed compounds with different levels

of hardness. This range makes it easy to swap when drying conditions change, e.g. going to a harder compound during winter to avoid scratching, and vice versa.

To recap, the harder to sand products should be used in the colder weather (winter). In these conditions the binder will not cure as hard, however it will still be hard enough to resist swirl marks, scratching and trade damage.

The easiest products to sand should be used in warm weather, when the binder will cure harder. This creates a surface that is easy to sand and can be machine sanded in summer without leaving swirls and dig marks.

For further details see the full article on the GIB® Website headed “Joint Systems Recommendations – Seasonal Change”.



SPEED UP DESIGN, CONSENTING AND INSTALLATION

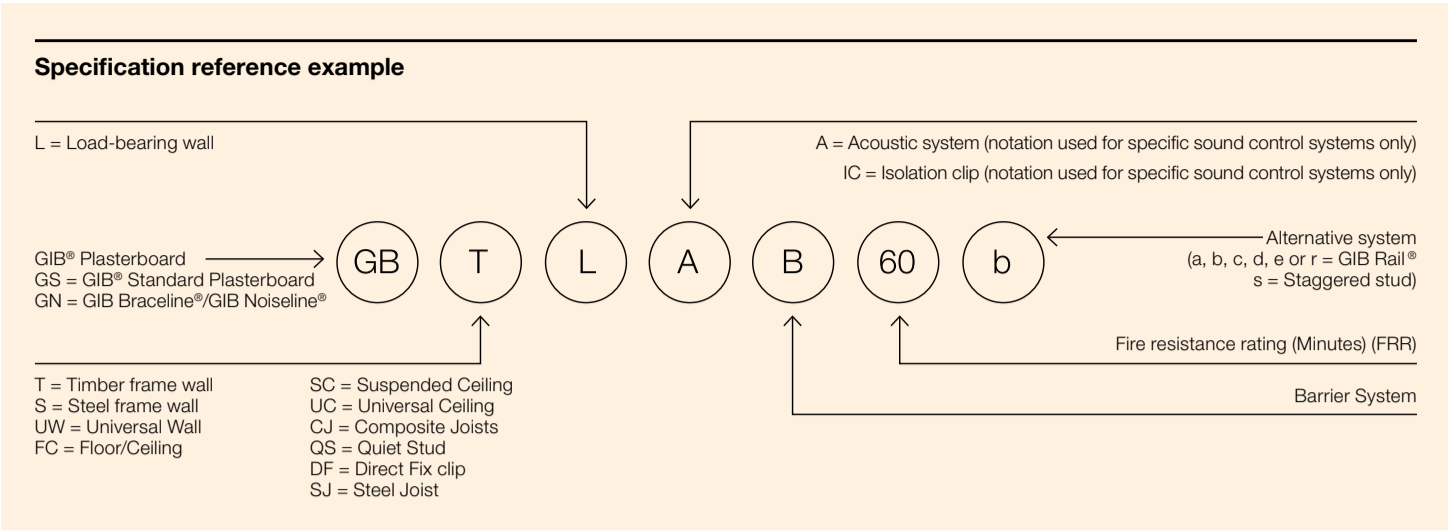
LITERATURE

by John Kitchen
Architectural /
Commercial Lead



Winstone Wallboards’ GIB® plasterboard systems have been developed for New Zealand conditions for over 90 years with a commitment to independent testing and assessment to ensure stated system performance levels are met.

By using standard GIB® Specification Reference Numbers, specifiers can be assured that all the essential design information needed to build walls, floor/ceiling and suspended ceiling systems is clearly communicated to all parties. The performance of noise control and fire systems are very sensitive to design detailing and construction practices so it is important to use only GIB® branded components where specified and follow the specified systems.



What is a GIB® Specification Reference Number?

All of the GIB® Fire, Noise and Bracing systems are coded to provide a quick reference identifier.

A wall specification such as GBTLA30b relates directly to a specific GIB® plasterboard system which denotes what material the wall framing is made from; if the wall is load-bearing or not, what level of acoustic and fire performance is achieved and whether alternative options exist which perform the same.

In addition, each GIB® Specification Reference has a full ‘System data sheet’ which details framing requirements insulation infill, GIB® plasterboard wall lining type including orientation of

sheets, acoustic sealant details and the specification and location of fasteners.

What if your lining requirements are slightly different to a published GIB® System?

From time to time your clients’ requirements may slightly differ from the one of the published systems.

Refer to our Board Substitution Options (Page 16 of the GIB® Site Guide) GIB® plasterboard linings can be substituted with an equivalent thickness alternative GIB® plasterboard linings such as GIB Aqualine® for increased water resistance or GIB Toughline® for increased impact resistance.

It is recommended that the original GIB® Specification Reference is maintained with a note or keynote added stating the slight variation. We are in the process of creating specific system codes that utilise, for example, GIB Toughline® to reduce the need to use GIB® alternative linings.

In cases where GIB EzyBrace® Systems and GIB Noise Control® Systems may be required for a load-bearing intertenancy wall, a similar process is recommended where the base GIB® Specification Reference Number is noted with a minor variation or keynote.

For specific requirements please call the GIB® Helpline 0800 100 442 or get in touch with your GIB® Specification Manager.

ACHIEVING A QUALITY FINISH

TECHNICAL

by Russell Pedersen
Technical Support and
Training Manager



The interior lining of your home is often one of its most visible features. So, taking some time at the start of a project to help achieve a satisfying quality finish makes sense.

Levels of Finish

‘Levels of finish’ refers to the quality of finish when installing and stopping plasterboard. In residential homes, Levels 4 and 5 are the most commonly specified.

Level 4 is the most common level of finish and is typically used when noncritical lighting falls on satin, flat or low-sheen paints.

Level 5 represents the highest level of finish possible and should be considered where gloss, semi-gloss or dark-tone

paints are specified or in critical lighting conditions.

The importance of framing

The substrate beneath the wall linings has the greatest impact on the level of finish that can be achieved. Check that the surface is flat including nogs that are not flush, nails that are not below the framing surface, nail plates or hold downs not flush with the surface or insulation bulging between studs.

GIB Ultraline®

For an optimum Level 4 finish, look no further than GIB Ultraline®. Its smooth Pearlcoat™ coated surface paper reduces the impact of critical lighting and closely matches the colour and consistency of jointing compounds. That means minimal visibility of sheet joints and a quality, seamless finish.

Achieving a Level 5 Finish

For a premium Level 5 finish, the entire wall or ceiling must be covered in a thin layer of ‘skim coat compound’ (e.g. GIB Plus 4®). Skim coating smoothes out the surface texture and porosity. Stricter framing and installation requirements are also needed.

What is Critical Lighting?

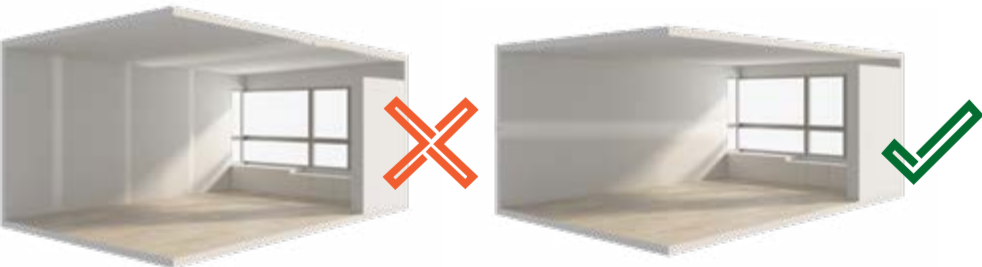
When natural or artificial light strikes a wall or ceiling at a shallow angle, surface irregularities can really stand out. That’s what we call ‘critical lighting’. No sheet lining is 100 per cent free of surface imperfections, but careful consideration of lighting and materials will minimise the imperfections and create the best possible finish.

Quality of Finish Tips

- If you’re striving for a first-rate finish, choose GIB Ultraline®, which has a Pearlcoat™ coated surface paper to ensure optimal results.
- To minimise irregularities avoid harsh lighting conditions and opt for light colours.

For more information refer to the ‘Achieving a Quality Finish’ section at gib.co.nz/homeowner

BELOW LEFT: Vertical fixing increases the number of joints and ceiling fixing. **BELOW RIGHT:** Horizontal fixing achieves a more uniform appearance.



BELOW: Non-recommended and recommended downlight options.



THE GOOD, THE BAD AND THE UGLY

COMMUNICATION

by Gordon White
Market Manager
Residential



At Winstone Wallboards we are always looking for ways to improve. That's why we always want to hear your feedback (including the good, the bad and the ugly!)

Here are just some of the recent changes we have made as a direct result of your feedback.

"Every year in Auckland when we are frantic during December and your delivery lead times for Direct to Site Services (DTS) get pushed out causing us logistics headaches."

Action: Our Auckland warehousing and distribution capabilities were reviewed to identify choke points. The result was an additional new warehouse being brought online. This has further increased our ability to pick and distribute more orders, even during peak times.

"When using the DTS service I hate it when I get a separate invoice for extra labour. It might sound minor but I waste hours trying to match up which labour charge goes with which job and makes it more difficult to keep an accurate record of jobs costs".

Action: Winstone Wallboards has changed its extra labour billing process to get extra labour and plasterboard product charges onto the same DTS invoice. This means reduced instances of having multiple invoices for the same DTS delivery, or to put it another way the amount of customer invoices has been reduced by over 4,500 per year.

"As a stopper I want a representative who is a specialist and knows the stopper business inside and out".

Action: Winstone Wallboards has recently employed an on-site stopper specialist based in Auckland. This is in addition to the existing National Area Sales Manager team. Please feel free to contact Ian Morrissey via e-mail ian.morrissey@gib.co.nz or on mobile 022 326 0306 if you have a compound or stopping related inquiry.

If you have any additional ideas, comments or feedback on what Winstone Wallboards can do to help make your job easier please feel free to drop us a line at info@gib.co.nz

RECRUITMENT

TERRY LI

Area Sales Manager



Our new Area Sales Manager for Auckland, Terry Li, is committed to building strong relationships with our customers and providing them with a first-rate customer experience. Specialising in our residential builder and merchant markets, Terry's unique set of skills and expertise are an excellent asset. He has a strong background in the building materials merchant sector, having worked at Mitre 10 as a Trade Administrator/ Asian Market Representative, and more recently at PlaceMakers as a Customer Service Team Leader for Trade. We are certain that Terry's unique set of skills and experience will be very beneficial for our customers.

ALEXIA MILES

Customer Service Team Member



Customers will enjoy top-notch service from the newest member of our Call Centre Team, Alexia Miles. Passionate about providing a memorable customer experience, Alexia goes the extra mile to not just meet, but exceed, customer expectations.

Previously Alexia has worked as a staff trainer for The Warehouse, done data entry at New World, and been an Administrator for Castle Plumbing. She comes to us with a recently-gained Diploma in Business Management and an excellent understanding of customer requirements.

RUSSELL PEDERSEN

Technical Support and Training Manager



Russell Pedersen has recently joined Winstone Wallboards as the Technical Support and Training Manager.

Russell's appointment takes the Training Team to five members, which increases the technical support available to our staff and customers.

Russell brings a wealth of experience from previous roles throughout the industry, and has a background in building, carpentry, and technical sales. In his most recent role he excelled in technical problem solving, producing great results for their customers and the creation of a premium offer in the market.

JENNIFER HARAKI

Technical Advisor



Jennifer Haraki has joined Winstone Wallboards as a Technical Advisor, bringing with her a wealth of knowledge and expertise to benefit customers. Not only is she a competent architectural drafts person, but she is also a qualified carpenter (with Advanced Trade Certificate) and has completed a Quantity Surveyor Cadetship. Jennifer has an excellent understanding of legislation and processes thanks to her previous role as a Council Building Processing Officer and Inspector. A qualified project manager, she also has experience on residential and commercial projects on both general and Maori land, and has held several building consultation and technical support roles, including building consent auditing and mediation.

DESIGNING
WALL TYPES FOR
EFFICIENCY

VALUE MANAGEMENT

by Nicole Stock
Market Manager
Commercial



Our team of Area Sales Managers - Commercial see a lot of unintentional over-specification of GIB® systems. If the specification outstrips the need, you are left with a ripe opportunity for value management. And for the designer, this means rework, re-drawing, re-labelling, re-keynoting, re-specifying.

To choose the most cost effective wall and ceiling systems, particularly for commercial projects, it can be useful to follow this approach:

Collating information

- 01. Identify the type of wall or ceiling. (Is it a services shaft wall, a basement wall backing onto a corridor, a living space against a living space?)
- 02. Identify the acoustic and fire performance required for that wall. (This will be supplied by the fire or acoustic engineer.)
- 03. What properties or requirements does this wall need to have in addition to fire and acoustic properties? (Does it need a wide stud for plumbing services? Will there be a lot of penetrations through the wall?)

- 04. Steel or timber framing?
- 05. Choosing the System: Start with the fire rating. If you need a 30 minute fire rated system, work through the GIB® Fire Rated Systems (FRR) that give a 30 minute FRR, finding one that gives you the STC rating you are after. If you can't achieve the STC you need with the 30 minute fire rating, move up in performance as required. As you move to higher STC ratings, the FRR will rise as well, so aiming for the minimum FRR to meet the required STC will give you the most efficient overall system.
- 06. What services do you have in that wall? Do you need baffles or fire expansion joints, or seismic detailing?

- 07. Does the wall require additional specific performance like impact resistance or moisture resistance? Use the GIB® alternatives table to swap GIB Fyreline® for GIB Aqualine® or GIB Braceline® GIB Noiseline® for GIB Toughline®, maintaining the integrity of the complete GIB® system but with added benefits.

For more tips and tricks for efficient specification and cost effective detailing in commercial projects, call the GIB® Helpline on 0800 100 442 to ask about our CPD-accredited training on efficient wall design.

THE PROVEN CEILING
SYSTEM FOR FEWER
CALL BACKS

PRODUCT

by Cath Montgomery
Product Manager

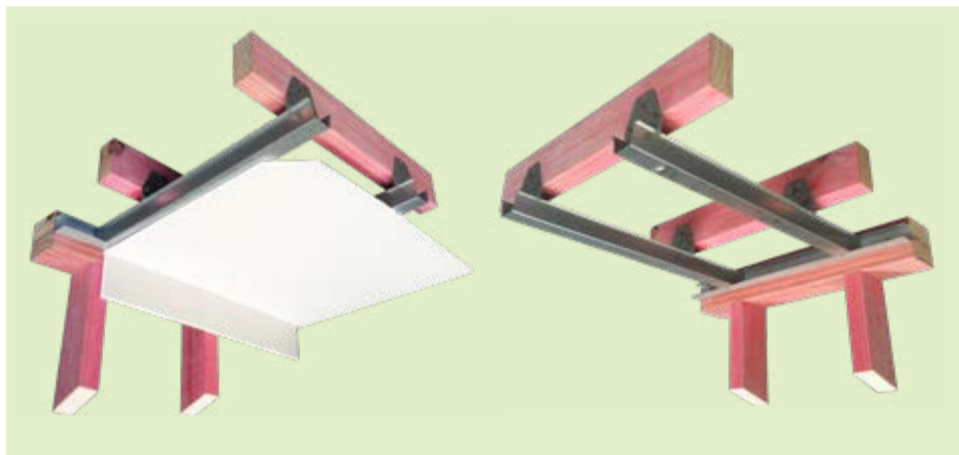


Let's talk about trust. It's what we at Winstone Wallboards hang our name on and that includes GIB® Rondo® Metal Ceiling Battens. The proven ceiling system for fewer call backs.

GIB® Rondo® custom designed system forms a rigid yet flexible ceiling framework and, unlike timber, GIB® Rondo® Metal Ceiling Battens don't warp or shrink with moisture changes which greatly reduces the chance of cracked plaster work and popped fasteners.

GIB® Rondo® Systems provide a range of battens, clips and accessories for a multitude of different fixing scenarios including options suitable for noise reduction and a variety of suspended ceiling options. As with all GIB® products, our well established and highly rated technical team are available to quickly handle any GIB® Rondo® related queries.

So hang your ceiling on GIB® Rondo® for flatter ceilings, fewer call backs and reduced risk. Why gamble with alternatives, specify GIB® Rondo® Metal Ceiling Battens for peace of mind.



For further information call the GIB® Helpline on 0800 100 442 or go to gib.co.nz/systems

GIB® KEY INDUSTRY EVENTS

| WHEN | WHAT | WHERE |
|---------|--------------------------------|------------------|
| May 1 | CMS Conztruct / GIB TradeTalk® | Hamilton |
| May 2 | CMS Conztruct / GIB TradeTalk® | Auckland |
| May 3 | CMS Conztruct / GIB TradeTalk® | Whangarei |
| June 19 | GIB® Digest | Auckland |
| June 19 | CMS Conztruct / GIB TradeTalk® | Wellington |
| June 20 | CMS Conztruct / GIB TradeTalk® | Palmerston North |
| June 21 | CMS Conztruct / GIB TradeTalk® | New Plymouth |
| July 9 | GIB TradeTalk® | Whitianga |

| WHEN | WHAT | WHERE |
|-------------|--------------------------------|----------------|
| July 10 | GIB TradeTalk® | Thames |
| July 11 | GIB TradeTalk® | Hamilton |
| July 24 | CMS Conztruct / GIB TradeTalk® | North Auckland |
| July 25 | CMS Conztruct / GIB TradeTalk® | Tauranga |
| July 26 | CMS Conztruct / GIB TradeTalk® | Napier |
| October 3 | GIB® Digest | Auckland |
| October 10 | GIB® Digest | Christchurch |
| November 13 | GIB® Digest | Wellington |

Please be aware that dates or location may change at short notice.
For further information visit gib.co.nz or call the GIB® Helpline on 0800 100 442.

2018 GIB®
ARCHITECTS'
REGATTA

EVENT

by Jo Curteis and Sarah Joblin

What a great day to be on the water!

On Monday 26 February 2018, Winstone Wallboards held the 31st annual GIB® Architects' Regatta at Westhaven Marina in Auckland, hosting around 500 participants on 39 yachts. Over the years this event has become a highlight on the GIB® calendar, and the team truly value the opportunity to mix with our Architectural and Specifier customers.

This year the conditions were perfect as the teams battled for line honours. Action was fierce and while there was a lot of laughter and fun, there were also many clever tactical moves on display. The competitive nature of the event always provides for some great racing, and this year was no different.

Taking out 1st place in the Spinnaker Division was Brian Trubovich Architect on Higher Ground, the same yacht that won last year. And in hot pursuit taking out 2nd place was Hume Architects Ltd on Kaimai Flyer. In the Non-Spinnaker Division, it was Paul Brown Architects on GO that crossed the line in 1st place, followed closely by Peddle Thorp on Elysium securing 2nd place. Our final cup, a non-racing trophy for Sponsors Choice, went to Graham Applin Architect on Double Bruyn.

Congratulations to all our winners.

Once again, thanks to all those who helped on the day, in particular our sponsor family, Tasman Insulation, Laminex New Zealand and PPG Industries. It really is a great way to spend an enjoyable afternoon and celebrate with the Auckland architect and specifier fraternity. We thank you all for making this such a memorable event and we look forward to seeing you back out on the water next year.

Official Prize List

| SPINNAKER DIVISION – 1 ST | |
|---|---|
| Prize: | GIB® Cup (Sponsored by Winstone Wallboards) |
| Practice | Brian Trubovich Architect |
| Yacht | Higher Ground |
| SPINNAKER DIVISION – 2 ND | |
| Prize: | Tasman Cup (Sponsored by Tasman Insulation) |
| Practice | Hume Architects Ltd |
| Yacht | Kaimai Flyer |
| NON-SPINNAKER DIVISION – 1 ST | |
| Prize: | GIB® Cup (Sponsored by Winstone Wallboards) |
| Practice | Paul Brown Architects |
| Yacht | Go |
| NON-SPINNAKER DIVISION – 2 ND | |
| Prize: | Laminex NZ Cup (Sponsored by Laminex New Zealand) |
| Practice | Peddle Thorp |
| Yacht | Elysium |
| SPONSORS CHOICE – ALL ROUND SOLID PARTICIPATION | |
| Prize: | PPG Cup (Sponsored by PPG Industries) |
| Practice | Graham Applin Architect |
| Yacht | Double Bruyn |



TOP ROW FAR LEFT: 1st Spinnaker Division, Sponsored by Winstone Wallboards, Brian Trubovich Architect (Higher Ground) and team and David Thomas (WWB), **THIRD FROM LEFT:** 1st Non-Spinnaker Division, Sponsored by Winstone Wallboards, Matthew Simpson from Paul Brown Architects (GO) with David Thomas (WWB), **BOTTOM ROW FAR LEFT:** 2nd Spinnaker Division, Sponsored by Tasman Insulation, Hume Architects Ltd (Kaimai Flyer) and David Thomas (WWB), **SECOND FROM LEFT:** 2nd Non Spinnaker Division, Sponsored by Laminex New Zealand, Peddle Thorp (Elysium) with David Thomas (WWB), **LEFT:** Sponsors Choice, Sponsored by PPG Industries, Graham Applin Architect (Double Bruyn)

CONGRATULATIONS
TO THE WINNERS
OF THE BREAKFAST
SHOUT

- Murray Winnmill, Timaru District Council
- Kat Heboen, Stevens Lawson Architects

