



Which compound can be used on a painted surface?

This is a popular question asked when doing patch work or a renovation.

To address this question lets get to basics. When a compound is applied to a new plasterboard surface it gets intermeshed with the fibres in the paper (Figure 1). The spaces in-between the fibres act as keying points for the compound to adhere. Setting compounds (plaster based) grow gypsum crystals in-between these microscopic spaces and bring about good adhesion to the paper. When air drying compounds (ready mix) are used, the glue (binder) in these compounds harden (coalesce) on drying and bring about the adhesion.

When painting a new plasterboard surface, the paint coats the paper fibres and forms a film over the whole surface (Figure 2).

Setting compounds do not get many keying points on a painted surface resulting in poor adhesion. On painted surfaces it is better to use an air drying compound with a relatively high amount of binder. GIB Plus 4[®] has a high amount of binder and Winstone Wallboards recommends using this when stopping over painted surfaces. A light sand of the painted surface before compound application improves adhesion.

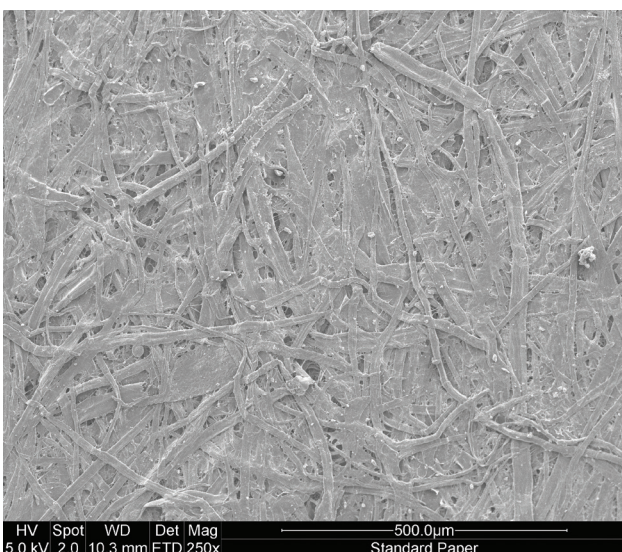


Figure 1 - Plasterboard surface showing fibres in the paper.

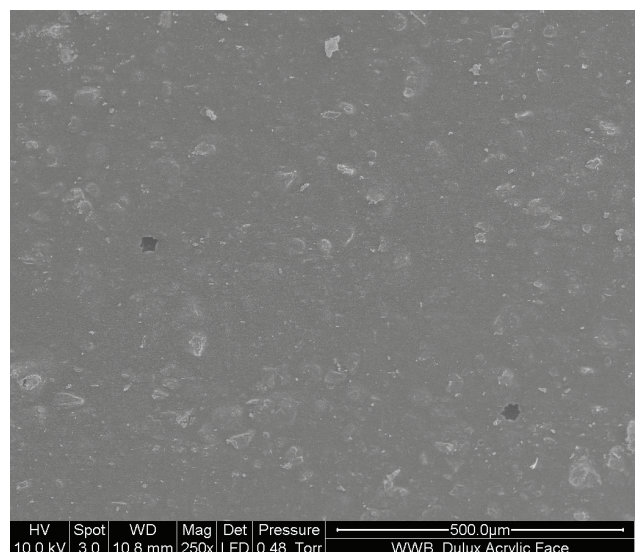


Figure 2 - Paint forms a film over the plasterboard surface.